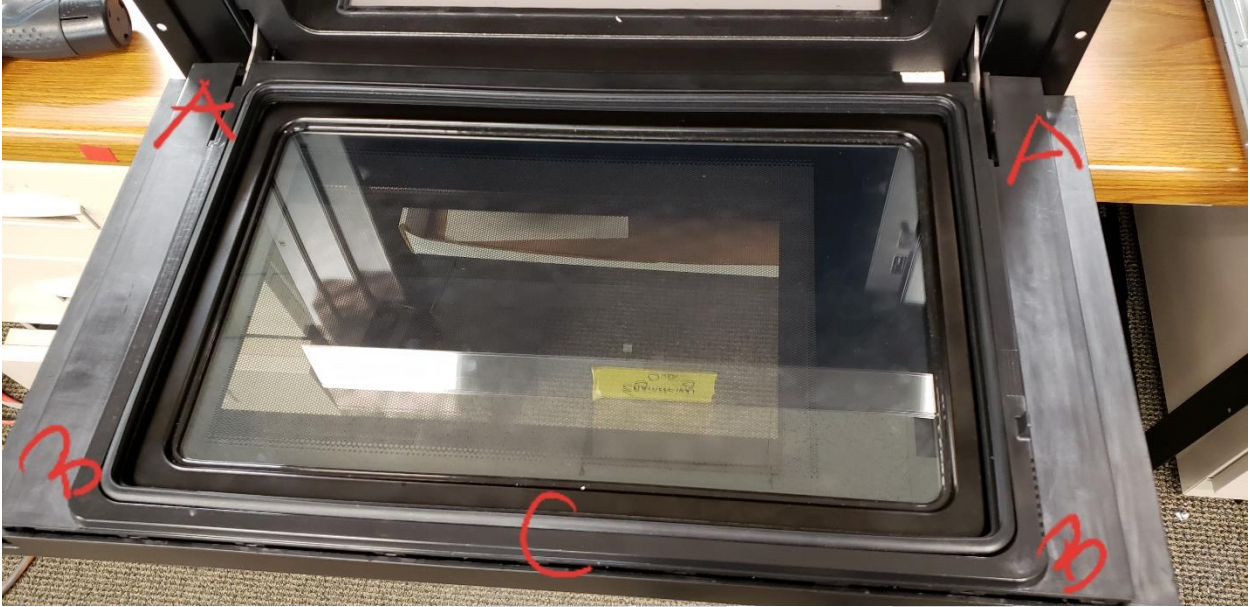


How To Replace the Display Board (SSC2489DS)

1. Use a flathead screw driver to remove the door frame.
This will require patience since it is made out of plastic.
Start on the outside corners of A, then work your way towards B.
Finally work from B towards C.
Then, gently remove the side opposite to C.

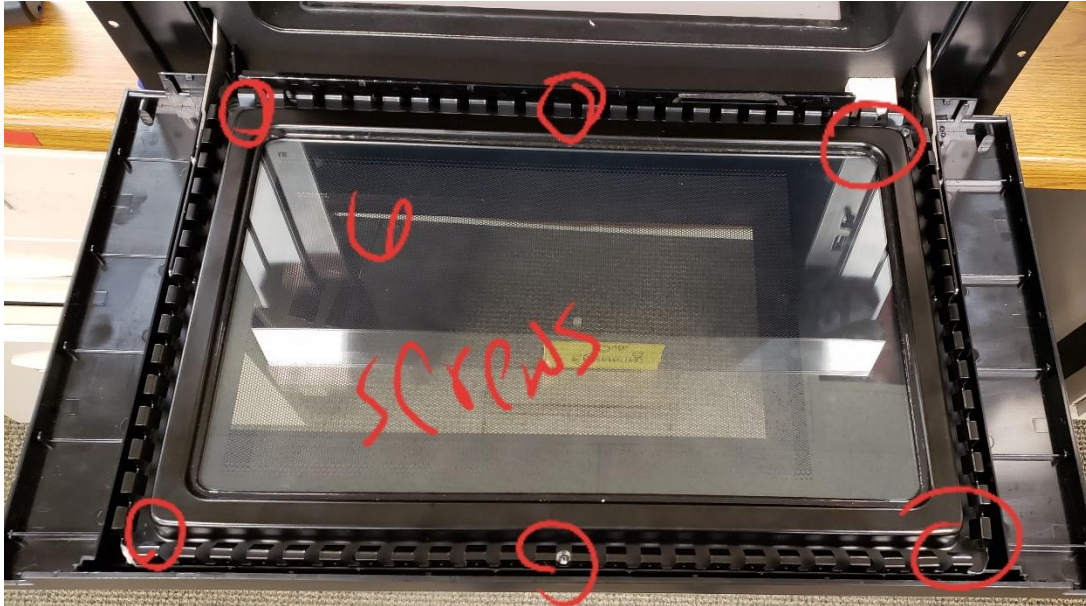


This is a preview of what it will look like as you remove it.

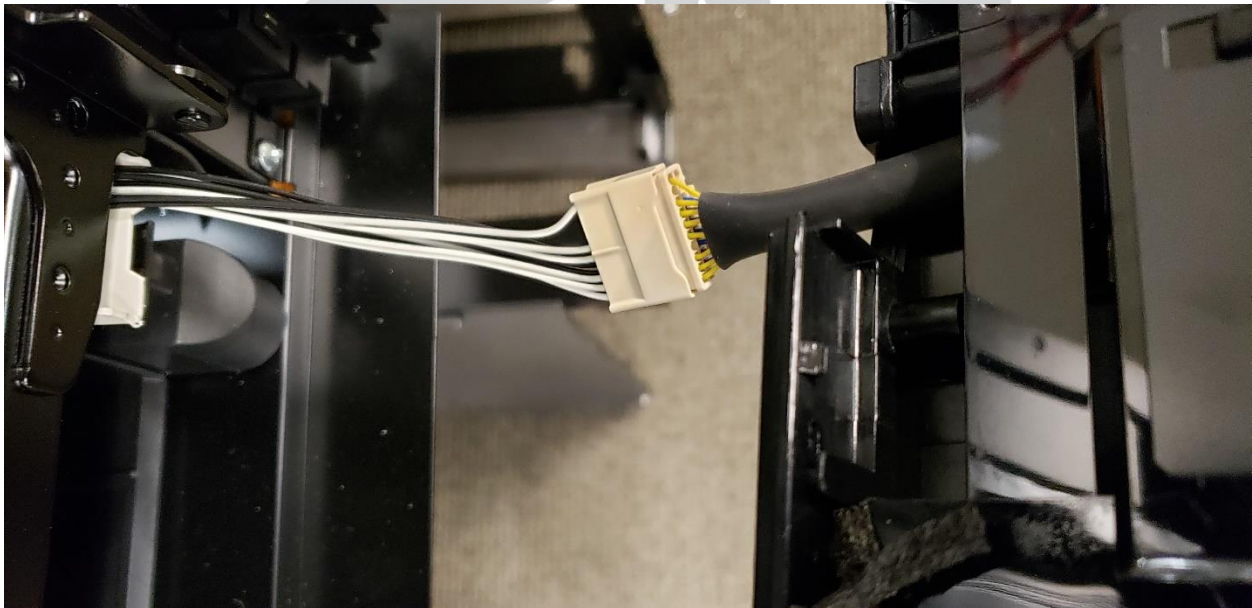


How To Replace the Display Board (SSC2489DS)

2. Once the door frame is removed, removed the six screws.
I recommend removing the corner screws first.
Then, when you only have the top and bottom center screws left – hold the two pieces together.
*If you do not, the choke cover will slam closed, or the outside of the door will fall. It is helpful to have someone help you with this part.

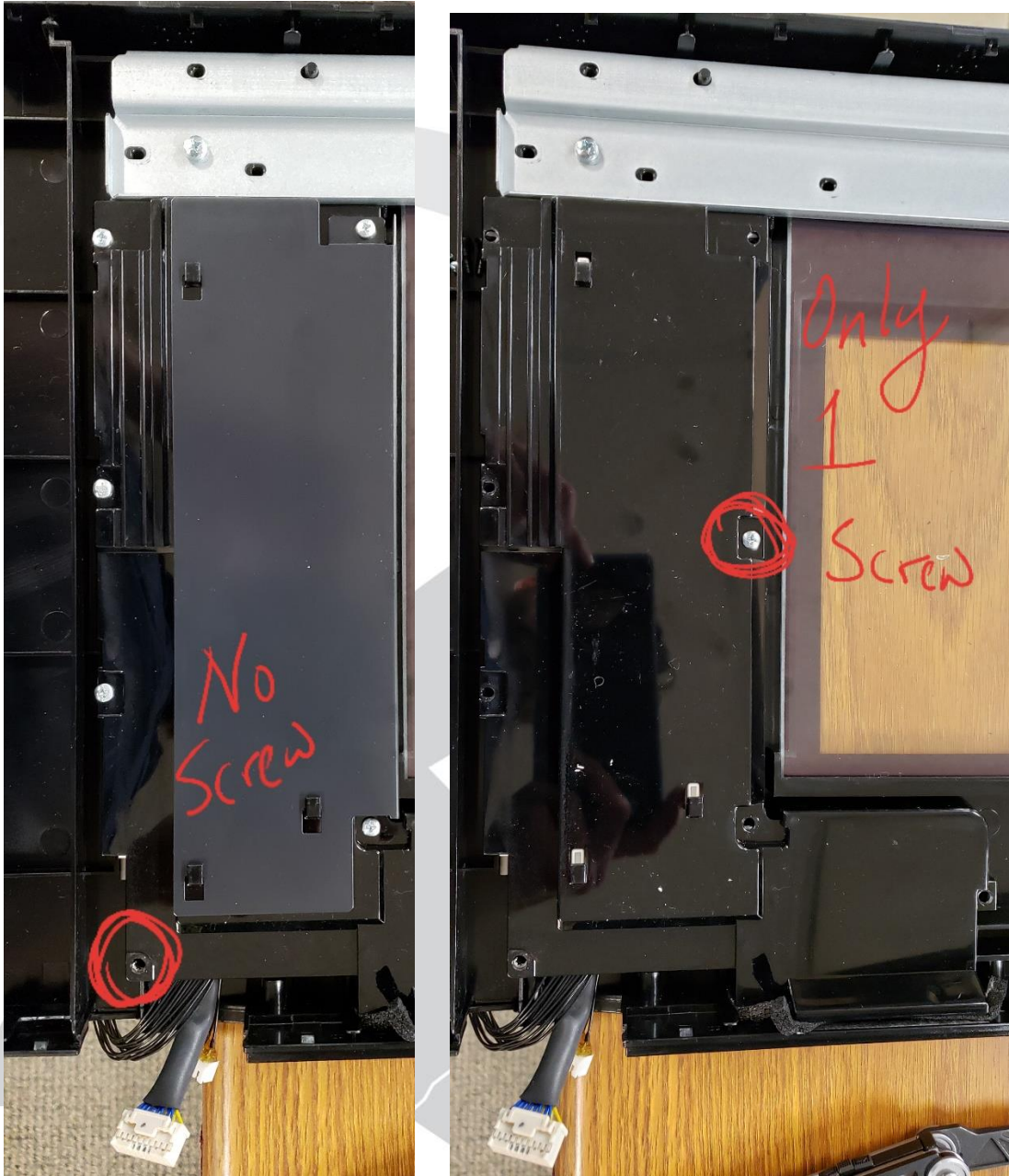


3. Next, Undo the connector.



How To Replace the Display Board (SSC2489DS)

4. Lay the door on a flat surface. The black metal piece slides out.
This will expose another screw.



5. Then, remove the screws.
(When assembling the door, you will want to replace this screw first.) ^^^^^^^^^^^^^
6. Then remove the black plastic piece.

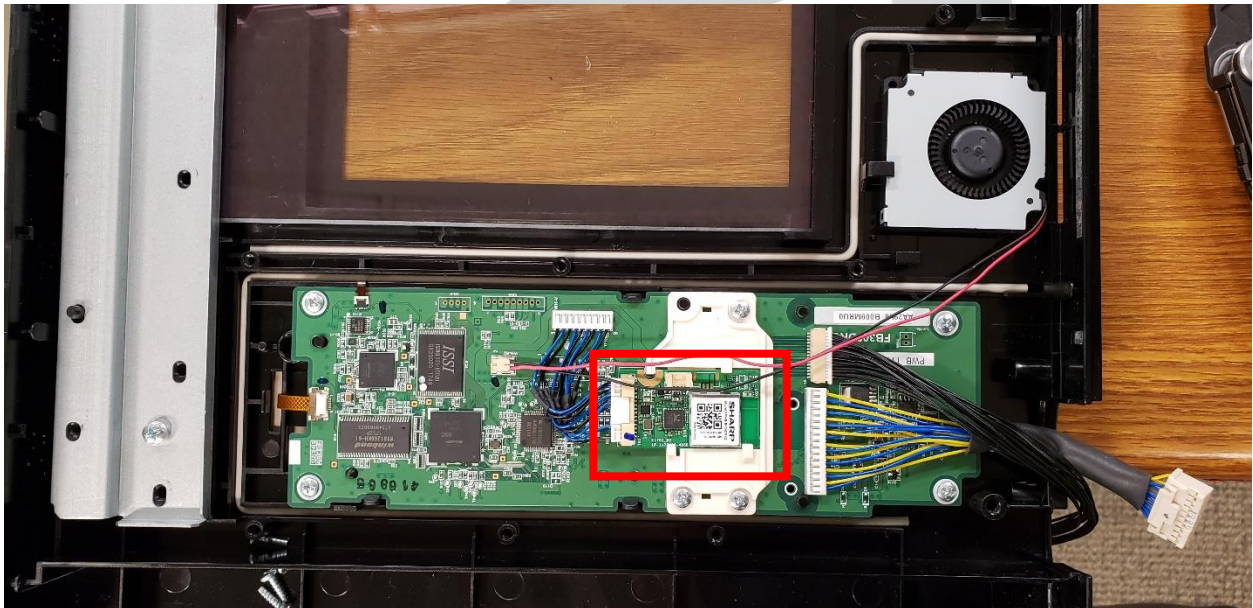
How To Replace the Display Board (SSC2489DS)

The screws have already been removed

(If you are assembling the door, do not add the screws yet. Add the screws after you have replaced the black plastic cover, then the black metal cover).



7. Remove the white, plastic cover.



(OPTIONAL)

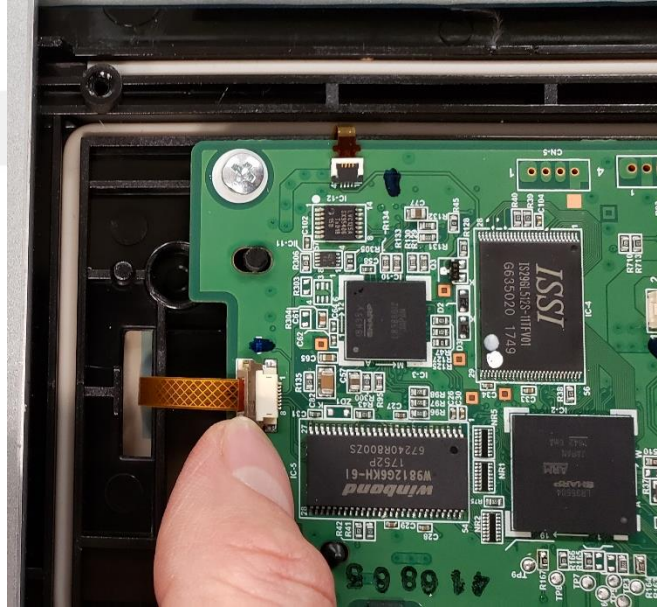
The WiFi Board is in the image above. It simply slides out.

This is how you replace the WiFi Board. The rest of the instructions explain how to remove the entire Display Unit.

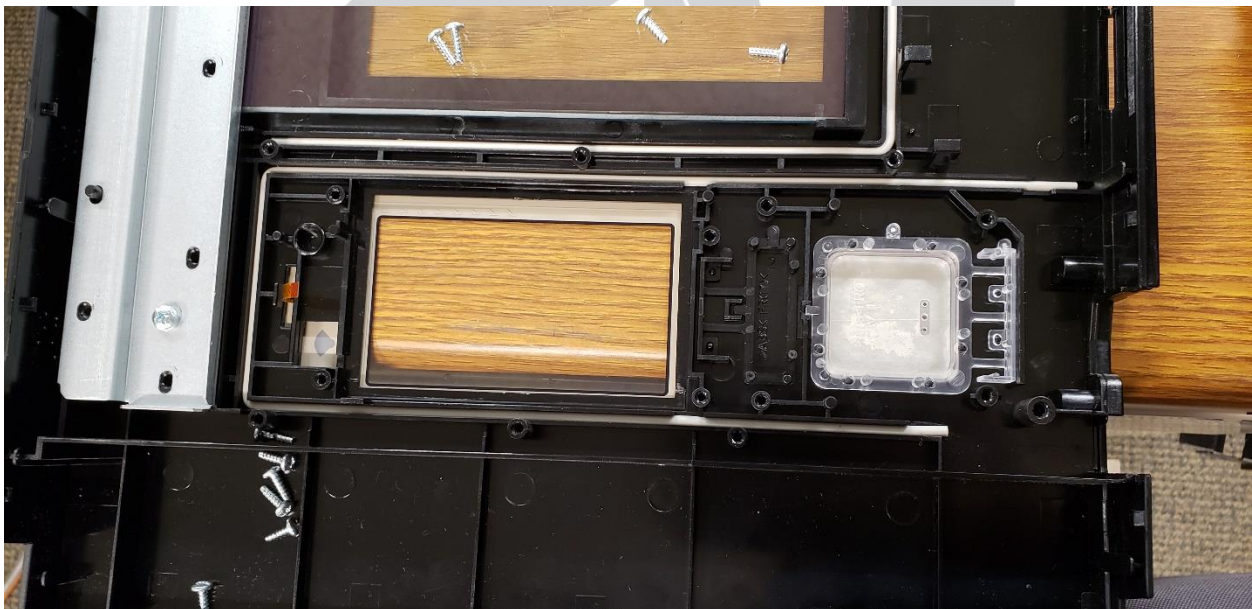
8. Remove the 4 corner screws.
9. Remove the 3 screws in the white, plastic cover
Notice there are no screws for the fan.

How To Replace the Display Board (SSC2489DS)

10. Lift up at the top of the fan connector to disconnect the fan.
11. Lift up on the connector at the top, then pull out the ribbon.



This is what you should see



Now follow these steps in the reverse order to assemble the door.

Please let me know if you need me to send a video of any specific section.